



public passenger transport software

Czech-Austrian Forum on Intelligent Transport Systems

Ing. Tomáš Chlebničan
Ing. Petr Buchníček
Vienna, 2013

CHAPS Ltd.

- leader on the field of public passenger transport IT solutions in the Czech Republic
- founded in 1993
- headquarters in Brno, Czech Republic
- solutions
 - ticketing and reservation system of Czech Railways
 - audiovisual passenger information systems
 - nation-wide multi-modal journey planner IDOS – winner of the 1st Smart Mobility Challenge
 - ...

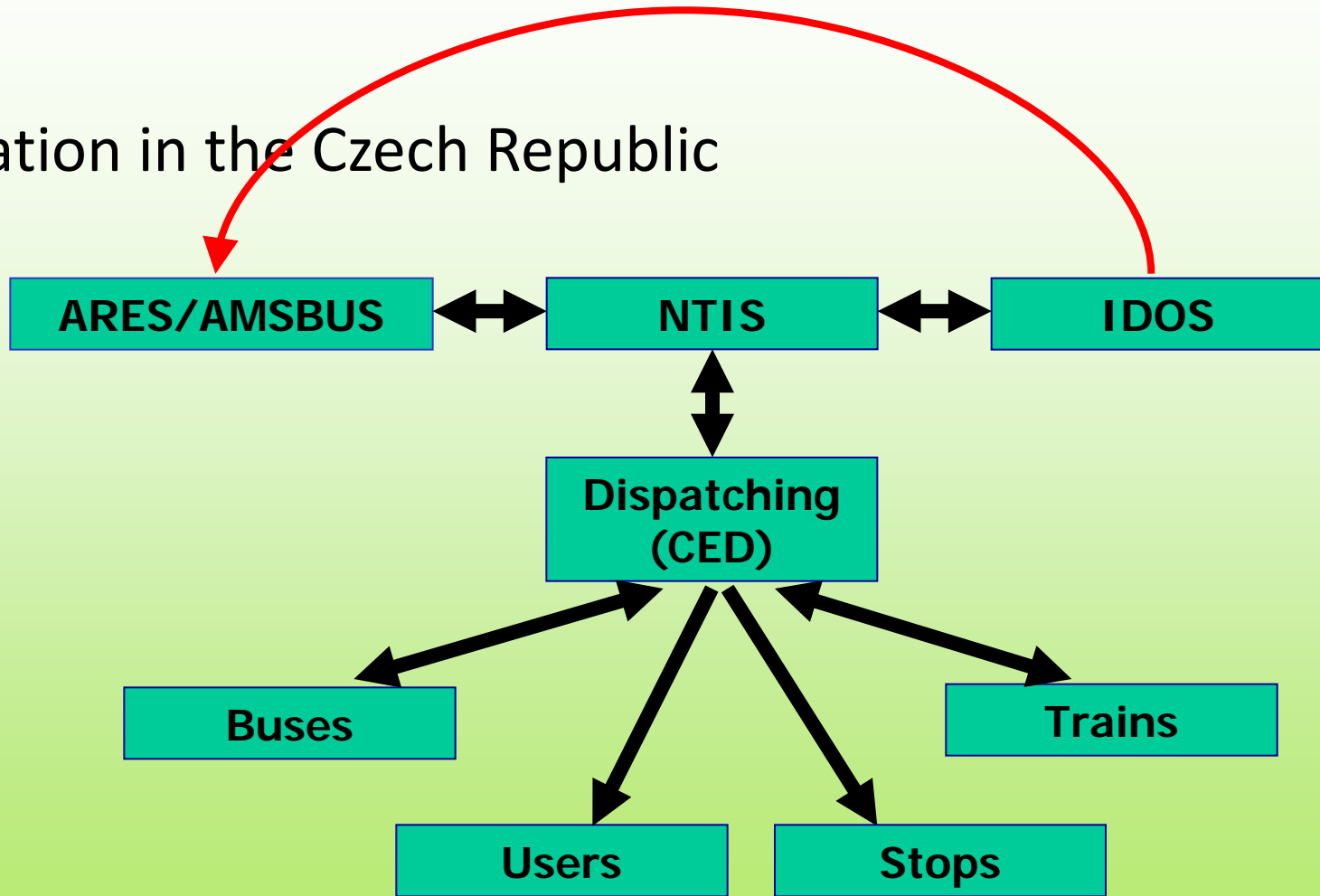
Multimodal transport & Door2Door mobility

- Journey information & planning
- Ticket reservations and payments
- On-line information when travelling
- Public transportation management
- & co-ordination across regions and also with other transportation means

Multimodal & Door2Door journey planning

- > Multimodal <
 - includes all mass public transport timetables (trains, buses, urban public transport, airplanes, ...)
 - optionally supports also taxis, private cars, bikes, etc.
- > Door2door <
 - includes address points and POI databases
- > journey planning <
 - an optimal unbiased seamless connection searching from a general point A to a general point B

Situation in the Czech Republic



NTIS basics

- timetables data collection is driven by a legal framework on a national level
- Ministry of Transport established the National Timetable Information System (NTIS) for public needs and commissioned CHAPS to operate it
- main principles
 - public transport operators submit timetables for approval in a standardized electronic format
 - responsible local authorities submit approved timetables electronically to NTIS

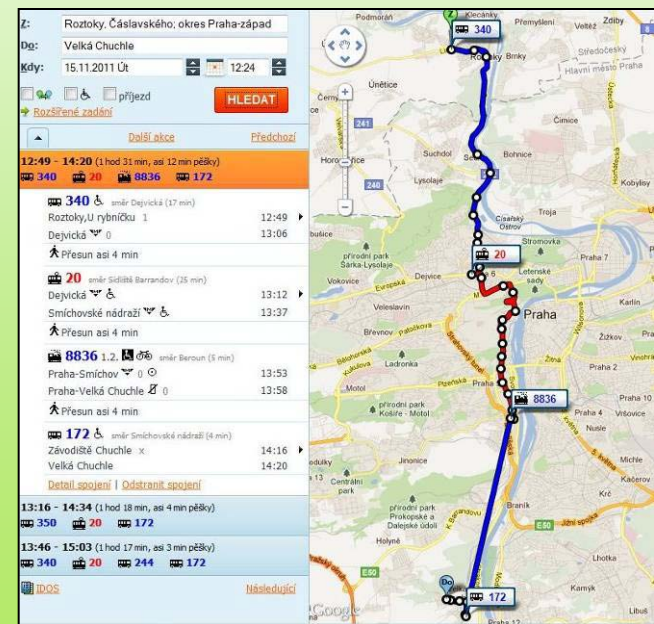
NTIS vs. journey planning

- NTIS contains timetables
- journey planners are expected to provide much more
 - advanced search options
 - transfer times
 - fares
 - international travel options
 - route visualization on a map background
 - real-time information
 - compare travel options
 - book/buy tickets
 - ...

All data and services must be reliable and up to date!

NTIS -> IDOS

- IDOS = MMJP based on data from NTIS
- main features
 - optimal seamless connections from/to station, POI, address or geo coordinates
 - departures/arrivals boards
 - stop timetables for urban public transport
 - Google maps route visualization
 - basic fares calculation
 - ...
- IDOS completely covers whole Czech Rep. and Slovakia





IDOS in numbers

- the search engine
 - about 220 million API requests per month
 - typically 100 to 300 API requests per second
- www.idos.cz
 - about 70 million page views per month (3/2013)
 - about 1.7 million unique users per month (3/2013)
 - in the top 5 most popular web applications on the Czech Internet
- iOS and Android mobile clients steadily in top 10 most popular Czech applications

IDOS in pictures

IDOS - Trains + Buses + All Public transport - Search for connection - Mozilla Firefox

From: Brno, Brátrova 1617/21
To: Praha, Mořská 599/6

Date and time: 25.4.2012 St 18:01

SEARCH

IDOS - JMK Public Transport - Stop leaflets - Mozilla Firefox

Line 5, **Dětská nemocnice > ÚSTŘEDNÍ HRBITOV - smyčka**

Měsíc	Stop	Zone	Hrs	25.4.2012 Wednesday
	Štefánikova č.101	100	4	
♦	Vozobudova	100	5	00 11 21 31 41 51
♦	Čáslavská	100	6	01 14 24 34 44 54
♦	Ingoská	100	7	04 14 24 34 44 54
0	Dětská nemocnice	100	8	04 14 24 34 44 49
2	Náměstí 28. srpna	100	9	04A 09 14A 19 24A 29
4	Městské náměstí	100	10	04A 09 14A 19 24A 29
6	Česká	100	11	04A 09 14A 19 24A 29
9	Štefánikova náměstí	100	12	04A 09 14A 19 24A 29
10	Nemocnice u sv. Anny	100	13	04A 09 14A 19 24A 29
13	Mendlovo náměstí	100	14	04 14 24 34 44 54
15	Pavlov	100	15	04 14 24 34 44 54
16	Nemocnice Milosrdných bratří	100	16	04 14 24 34 44 54
18	Celbí	100	17	04 14 24 34 44 54 54
♦	Hlávková	100	18	04 14A 19 24A 29 34
21	U Vesteců hrbitov	101	19	01A 11A 16 21A 31A 41
23	ÚSTŘEDNÍ HRBITOV - smyčka	101	20	01A 11A 16 21A 31A 41
			21	05A 20A 35A 40A 50A
			22	05A 20B 35B 40B 50B
			23	05B
			24	0

Operator: 15:12

Spojení

Odchod: Chudim
Mam Praha
15. 11. 2011 15:12

Hledat předchozí

Číslo spojení	Čas odjezdu	Čas příjezdu	Doba jízdy
22	1 h 0 min	1 h 36 min	115 km
Chudim	16:12		
Paroubice-Rosice n.L.	16:24		
Paroubice-Rosice n.L.	16:28		
Paroubice N.n.	16:32		
Paroubice N.n.	16:34		
Praha N.n.	17:48		
Praha N.n.	2 min		
Chudim	2 h 1 min	115 km	
Chudim	16:12		
Paroubice N.n.	16:35		
Paroubice N.n.	17:00		

Map IDOS - MHD Olomouc - Mozilla Firefox

Map IDOS - MHD Olomouc

From: Hlavní nádraží
To: Globus

Date and time: 25.4.2012 St 18:06

18:27 - 18:50 (23 min, asi 1 min pěšky)

- 14 x amí Náměstí Hrdinů (3 min) 18:27
- Hlavní nádraží D 18:27
- Náměstí Hrdinů E 18:36
- Přesun asi 1 min
- 27 x amí Globus (3 min) 18:40
- Náměstí Hrdinů G 18:50
- Globus 18:50

19:01 - 19:27 (26 min, asi 3 min pěšky)

- 2 x 27 19:01
- 27 19:27

19:35 - 19:57 (22 min)

- 12 x 27 19:35
- 27 19:57

000042 Praha-Ústí n. L.-Berlin-Kobenhavn-Helsingborg-Halmstad-Varberg-Göteborg-Udevalla-Sarpsborg-Ljungby-Jönköping-Linköping-Norrköping-Nyköping-Södertälje-Stockholm-Oslo

Plati od 1.5.2012 do 18.8.2015

Préparace zadávané: STUDENT AGENCY s.r.o. náměstí Svobody 88/17, 602 05 Brno, tel. 641 101 101

Číslo spojení	Čas odjezdu	Čas příjezdu	Doba jízdy	Středisko	Číslo spojení	Čas odjezdu	Čas příjezdu	Doba jízdy	Středisko
1	18:00	18:00	00:00	Praha, Hlavní nádraží	1	18:00	18:00	00:00	Praha, ÚAN Florencie
2	18:05	18:05	00:05	Ústí n. L., Mladá Boleslav	2	18:05	18:05	00:05	Ústí n. L., Mladá Boleslav
3	18:10	18:10	00:10	Berlin, Hauptbahnhof	3	18:10	18:10	00:10	Berlin, Hauptbahnhof
4	18:15	18:15	00:15	Kobenhavn, Østergade	4	18:15	18:15	00:15	Kobenhavn, Østergade
5	18:20	18:20	00:20	Helsingborg, Helsingborg	5	18:20	18:20	00:20	Helsingborg, Helsingborg
6	18:25	18:25	00:25	Halmstad, Halmstad	6	18:25	18:25	00:25	Halmstad, Halmstad
7	18:30	18:30	00:30	Varberg, Varberg	7	18:30	18:30	00:30	Varberg, Varberg
8	18:35	18:35	00:35	Göteborg, Göteborg	8	18:35	18:35	00:35	Göteborg, Göteborg
9	18:40	18:40	00:40	Udevalla, Udevalla	9	18:40	18:40	00:40	Udevalla, Udevalla
10	18:45	18:45	00:45	Sarpsborg, Sarpsborg	10	18:45	18:45	00:45	Sarpsborg, Sarpsborg
11	18:50	18:50	00:50	Ljungby, Ljungby	11	18:50	18:50	00:50	Ljungby, Ljungby
12	18:55	18:55	00:55	Jönköping, Jönköping	12	18:55	18:55	00:55	Jönköping, Jönköping
13	19:00	19:00	01:00	Linköping, Linköping	13	19:00	19:00	01:00	Linköping, Linköping
14	19:05	19:05	01:05	Norrköping, Norrköping	14	19:05	19:05	01:05	Norrköping, Norrköping
15	19:10	19:10	01:10	Nyköping, Nyköping	15	19:10	19:10	01:10	Nyköping, Nyköping
16	19:15	19:15	01:15	Södertälje, Södertälje	16	19:15	19:15	01:15	Södertälje, Södertälje
17	19:20	19:20	01:20	Stockholm, Stockholm	17	19:20	19:20	01:20	Stockholm, Stockholm
18	19:25	19:25	01:25	Oslo, Oslo	18	19:25	19:25	01:25	Oslo, Oslo

Possibilities of CZ-AT cooperation

- EC continues with its idea of „European MMJP“ – coordination of work/ideas/proposals
- data exchange (timetables, POI, ...)
- services exchange (realtime information, ...)
- know-how exchange
- ...

=> Central European MMJP?

Thank you for your
attention...

Ing. Tomáš Chlebničan
Ing. Petr Buchníček
CHAPS Ltd.
www.chaps.cz

